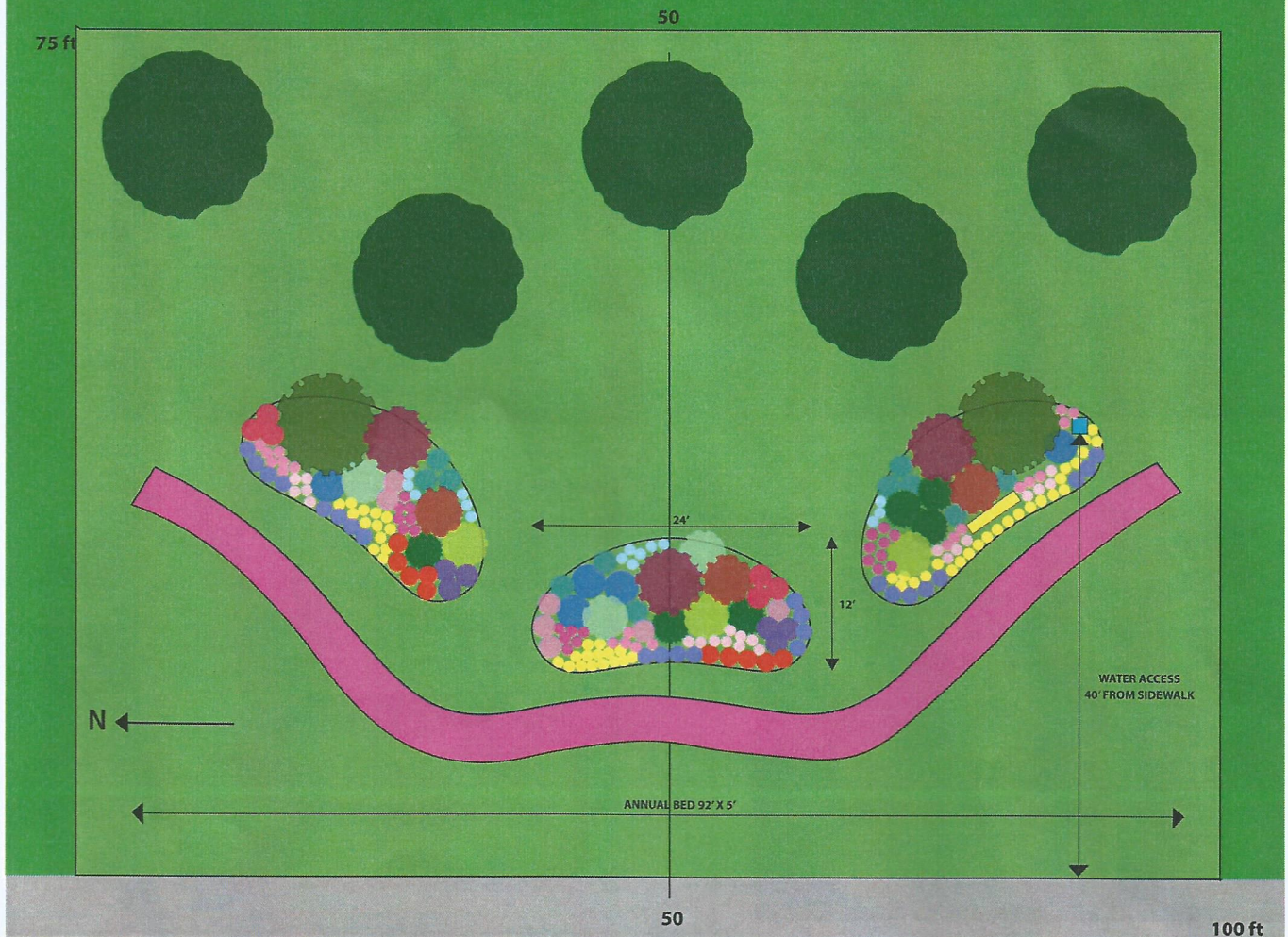


RODI ROAD AT MAPLE LANE

1/8 scale. 1" = 8ft



TREES & SHRUBS

- Inkberry
- Sweet Pepperbush
- Serviceberry
- Shrubby Cinquefoil
- Carolina Allspice
- Ninebark
- Hibiscus

GRASS

- Switchgrass

HERBACEOUS

- Blue False Indigo
- Beardtongue
- Purple Coneflower
- Aromatic Aster
- Wild Bergamot
- Anise Hyssop
- Coreopsis
- Blazing Star
- Swamp Milkweed
- Rattlesnake Master
- Black Eyed Susan

Common	Scientific	Qty	H' x W'	Season
Agastache 'Blue Fortune'	<i>Agastache 'Blue Fortune'</i>	6	3 x 2	Summer*
Serviceberry 'Autumn Brilliance' or other flowering tree	<i>Amelanchier canadensis 'Autumn Brilliance' or other flowering tree</i>	5		Spring/fall
Swamp Milkweed	<i>Asclepias incarta</i>	6	4 x 2	Summer
Aster 'October Skies'	<i>Symphotrichum oblongifolium 'October Skies'</i>	24	1.5 x 2	Summer/fall
Blue False Indigo	<i>Baptisia australis</i>	5	3 x 3	Spring
Carolina Allspice	<i>Calycanthus floridus</i>	2	8 x 9	Spring/summer/fall
Sweet Pepperbush	<i>Clethra alnifolia</i>	3	3 x 4	Spring
Coreopsis 'Berry Chiffon'	<i>Coreopsis 'Berry Chiffon'</i>	10	1.5 x 1.75	Summer/fall
Echinacea purpurea 'Magnus'	<i>Echinacea purpurea 'Magnus'</i>	21	3 x 1	Summer
Rattlesnake Master	<i>Eryngium yuccifolium</i>	15	4 x 1	Summer
Hibiscus 'Midnight Marvel'	<i>Hibiscus 'Midnight Marvel'</i>	3	4.5 x 4.5	Summer
Inkberry 'Shamrock'	<i>Ilex glabra 'Shamrock'</i>	6	3.5 x 3.5	Year-round
Blazing Star	<i>Liatris spicata</i>	22	4 x 1	Summer
Wild Bergamot	<i>Monarda fistulosa</i>	7	3.5 x 2	Summer
Switchgrass 'Northwind'	<i>Panicum 'Northwind'</i>	11	5 x 2.5	Summer/fall
Beardtongue 'Husker Red'	<i>Penstemon digitalis 'Husker Red'</i>	22	2.5 x 1	Spring/summer
Ninebark 'Diablo'	<i>Physocarpus opulifolius 'Diablo'</i>	3	6 x 6	Summer
Shrubby Cinquefoil	<i>Potentilla fruticosa</i>	3	3 x 4	Spring/summer
Black Eyed Susan 'Goldsturm'	<i>Rudbeckia 'Goldsturm'</i>	50	2 x 1	Summer

